

BOSS MAT - HD

PRODUCT SHEET



PRODUCT DESCRIPTION

The Honcho Boss Mats HD (**Heavy Duty**) provide highly visible, slip-resistant walkways for use throughout construction sites. Ideal for rough or uneven surfaces, such as gravel, sand, dirt and mud and can be used over frost and snow.

The coiled PVC structure traps mud and dirt from tradespeople's boots, preventing it from being walked through internal spaces.

FEATURES & BENEFITS

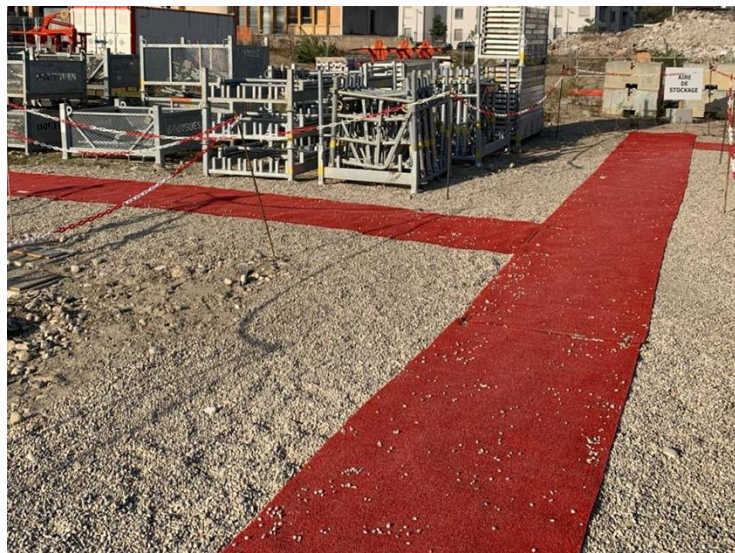
- High Visibility Safety Walkway
- Flame-Retardant
- Reusable
- Non-Leaching (Staining)
- Resistant to Frost
- Anti-Fatigue Properties
- Stays in Place
- Slip-Rated in both Wet and Dry Conditions
- Easy to Clean
- Resistant to Mould & Bacteria
- **Customise the mats with your own company logo!**

USES & LIMITATIONS

- Sand, Mud, Gravel, Clay, Grass
- Snow and Frost
- Hard Surfaces, including Concrete
- Scaffolding, Ramps & Plywood Walkways
- Uneven Surfaces, such as Mud & Gravel
- Ideal for use on the following projects: Civil Works, Health & Education, Data Centres, High-End Residential, Landscaping, Hospitality, Sports & Recreation Sectors and more

SPECIFICATIONS

- Roll Size: 1m x 10m
- Colour: Bright Red
- Roll Weight: 29kg
- **Product Code: BMHD29**



Water Resistant



Non - Leaching



Slip Resistant



Flame Retardant



Reusable

Disclaimer: Customers are advised to consider the information in this data sheet in the context of how the product will be used, including surfaces and any other products used. The information provided in this guide represents our best scientific and practical knowledge. Any advice, information or assistance provided by Honcho Supplies in relation to its products is given in good faith, however is provided without liability or responsibility. Due to the wide variety of site conditions we are unable to assume liability for any loss that may arise from the use of our products. The user is responsible for checking the suitability of products for their intended use.

BOSS MAT - HD

INSTALLATION GUIDE

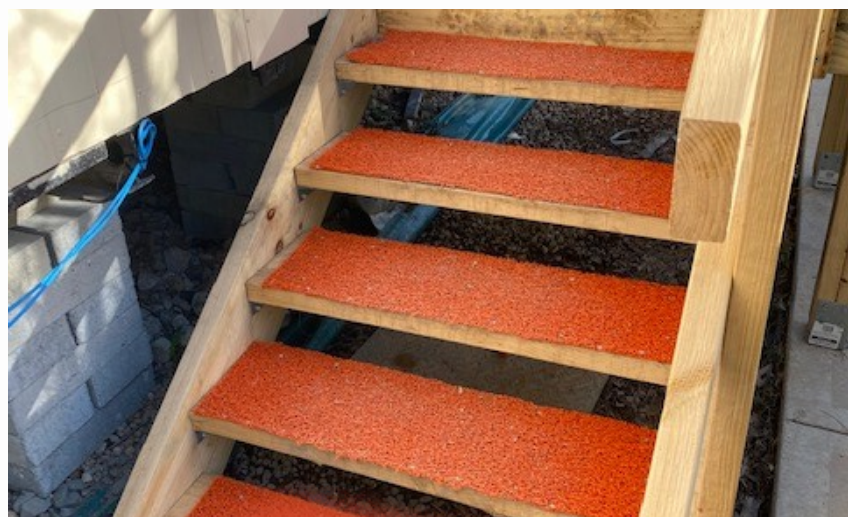
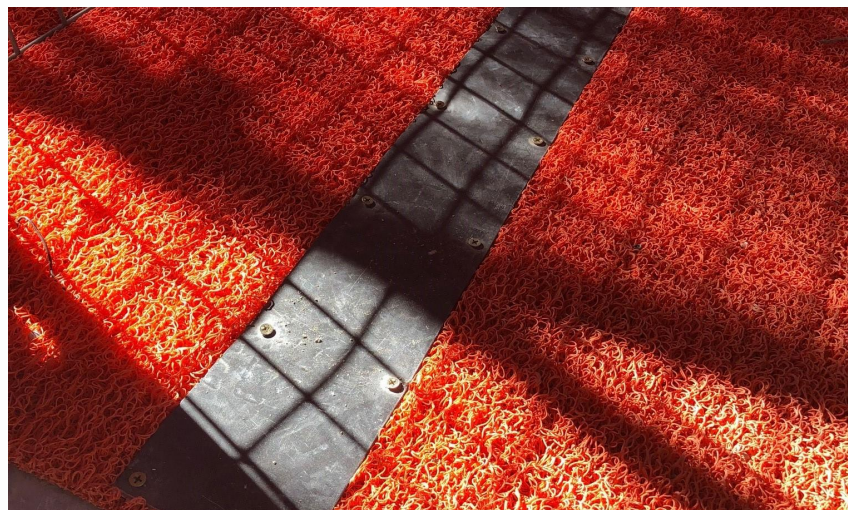


INSTALLATION STEPS

1. Kick out Boss Mat over surface
2. If using more than 1 mat to create extra width, simply butt mats up against each other and use cable ties to keep in place
3. Mats will stay in place due to their weight

ADHERING TO SURFACES

1. If installing Boss Mats on a ramp or stairs, we recommend using screws or metal brackets (refer to images) to adhere the mats to the surface
2. Simply cut mats using a sharp stanley knife or scissors
3. Garden pegs are recommended to keep the mats in place on softer surfaces, such as grass.



Disclaimer: Customers are advised to consider the information in this data sheet in the context of how the product will be used, including surfaces and any other products used. The information provided in this guide represents our best scientific and practical knowledge. Any advice, information or assistance provided by Honcho Supplies in relation to its products is given in good faith, however is provided without liability or responsibility. Due to the wide variety of site conditions we are unable to assume liability for any loss that may arise from the use of our products. The user is responsible for checking the suitability of products for their intended use.